

Monitoren van gedrag

The image shows a mobile application interface for a survey. It consists of two columns of questions. The left column has three questions, and the right column has three questions. Each question is followed by a slider or a set of radio buttons. The 'VERSTUREN' button is located at the bottom of each column.

Left Column:

- Question: **Bent u gisteren uit huis geweest om naar uw werk/school te gaan?** (Were you out of the house yesterday to go to work/school?)
Options: **NEE** (No), **JA** (Yes)
- Question: **Hoeveel uur bent u gisteren uit huis geweest?** (How many hours were you out of the house yesterday?)
Slider: Set to **5**
- Question: **Hoeveel personen kwamen gisteren buiten uw huis binnen 5 meter bij u in de buurt?** (How many people came to your house yesterday within 5 meters of you in the neighborhood?)
Options: **1-10**, **11-30**, **31-50**

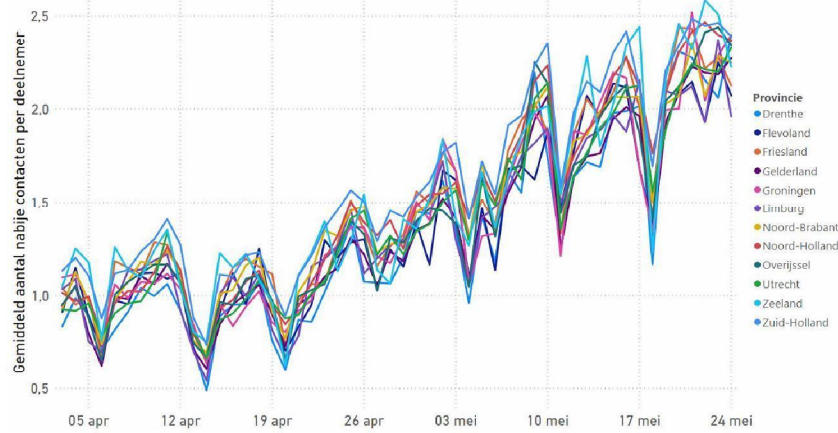
Right Column:

- Question: **Hoeveel personen hebt u gisteren thuis op bezoek gehad?** (How many people did you have at home yesterday for a visit?)
Slider: Set to **0**
- Question: **Hoeveel personen, uit bovenstaande twee vragen, kwamen gisteren dichterbij dan 1.5m?** (How many people, from the two questions above, came yesterday closer than 1.5m?)
Slider: Set to **5**
- Question: **Met hoeveel personen, uit bovenstaande drie vragen, hebt u gisteren binnen 1.5m gesproken?** (With how many people, from the three questions above, did you speak yesterday within 1.5m?)
Slider: Set to **0**

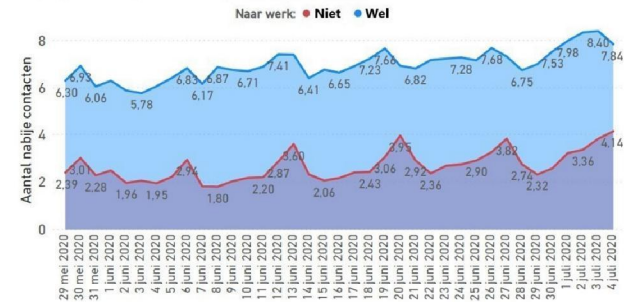
Buttons: **VERSTUREN** (SEND)

Monitoren van gedrag

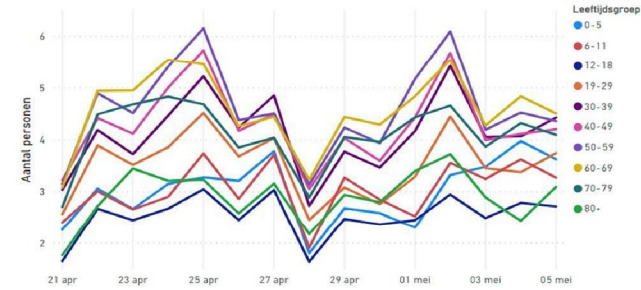
Structurele stijging in aantal nabije contacten



Dagelijks aantal personen binnen 1,5 meter



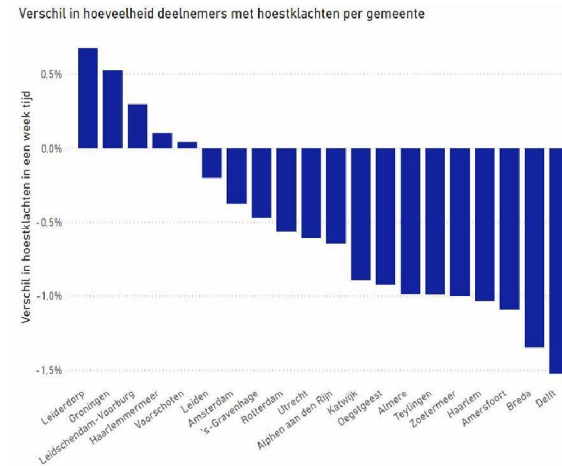
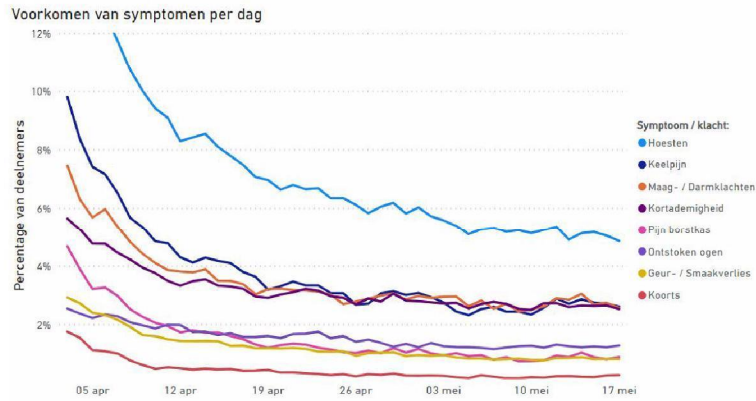
Aantal contacten binnen 5 meter per leeftijdsgroep



Monitoren van symptomen

| | |
|--|---|
| Hoest u? <input type="button" value="NEE"/> <input type="button" value="JA"/> | Hebt u maagdarmklachten? <input type="button" value="NEE"/> <input type="button" value="JA"/> |
| Hebt u last van keelpijn? <input type="button" value="NEE"/> <input type="button" value="JA"/> | Hebt u (eventueel stekende) pijnklachten in de borstkas? <input type="button" value="NEE"/> <input type="button" value="JA"/> |
| Hebt u koorts? <input type="button" value="NEE"/> <input type="button" value="JA"/> | Hebt u ontstoken ogen? <input type="button" value="NEE"/> <input type="button" value="JA"/> |
| Bent u kortademig? <input type="button" value="NEE"/> <input type="button" value="VERSTUREN"/> | Hebt u geur- of smaakuitval? <input type="button" value="NEE"/> <input type="button" value="VERSTUREN"/> |

Monitoren van symptomen



Monitoren van effect van versoepelingen

